



# GRINDING TOOLS



## Mini Bench Grinder, With Flexible Shaft



### TM-1A

Voltage:	230V/50HZ or 110V/60HZ
Power:	120W
Variable Speed:	0-10000 RPM
Hand Piece Collet:	Maximum 3.2mm
Flexible Shaft Length:	108cm
Grinding Wheel Size:	75 x20 x10mm
Arbor Hole:	10mm
Qty / Ctn:	4pcs
Ctn Size:	67x33x23cm
G.W./Ctn:	12kgs
N.W./Ctn:	11kgs

## Mini Buffing Machine



### TM-2B

Voltage:	230V/50HZ or 110V/60HZ
Power:	200W
Variable Speed:	0-10000 RPM
Motor Spindle Diameter:	8mm
Cloth Wheel:	75mm
Cloth Wheel Arbor:	Tapered Spiral Spindle
Qty / Ctn:	4pcs
Ctn Size:	67x33x23cm
G.W./Ctn:	12kgs
N.W./Ctn:	11kgs

Super Power,Multi-Purpose,Mini Bench Grinder



TM-2C

Voltage:	230V/50HZ or 110V/60HZ
Power:	200W
Variable Speed:	0-10000 RPM
Motor Spindle Diameter:	8mm
Grinding Wheel:	75x20x10mm
Grinding Wheel Arbor Hole:	10mm
Qty / Ctn:	4pcs
Ctn Size:	67x33x23cm
G.W./Ctn:	12kgs
N.W./Ctn:	11kgs

Mini Bench Grinder,With Drill Chuck



TM-2D

Voltage:	230V/50HZ or 110V/60HZ
Power:	200W
Variable Speed:	0-10000 RPM
Motor Spindle Diameter:	8mm
Grinding Wheel:	75x20x10 mm
Grinding Wheel Arbor:	10mm
Drill Chuck Size:	1-6.5mm
Qty / Ctn:	4pcs
Ctn Size:	67x33x23cm
G.W./Ctn:	13kgs
N.W./Ctn:	12kgs

## Mini Bench Grinder With Flexible Shaft



### TM-2E

<b>Voltage:</b>	230V/50HZ or 110V/60HZ
<b>Power:</b>	200W
<b>Variable Speed:</b>	0-10000 RPM
<b>Motor Spindle Diameter:</b>	8mm
<b>Grinding Wheel:</b>	75x20x10 mm
<b>Grinding Wheel Arbor:</b>	10mm
<b>Hand Piece Collet:</b>	1-4mm
<b>Flexible Shaft Length:</b>	97cm
<b>Qty / Ctn:</b>	4pcs
<b>Ctn Size:</b>	67x33x23cm
<b>G.W./Ctn:</b>	14kgs
<b>N.W./Ctn:</b>	13kgs

## Mini Buffing Machine, With Splash Guard



### TM-2F

<b>Voltage:</b>	230V/50HZ or 110V/60HZ
<b>Power:</b>	200W
<b>Variable Speed:</b>	0-10000 RPM
<b>Motor Spindle Diameter:</b>	8mm
<b>Cloth Wheel:</b>	75mm
<b>Cloth Wheel Arbor:</b>	Tapered Spiral Spindle
<b>Qty / Ctn:</b>	4pcs
<b>Ctn Size:</b>	72x38x26cm
<b>G.W./Ctn:</b>	20kgs
<b>N.W./Ctn:</b>	19kgs

## Mini Cutting Machine



### TM-2G

Voltage:	230V/50HZ or 110V/60HZ
Power:	200W
Variable Speed:	0-10000 RPM
Motor Spindle Diameter:	8mm
Cutting Disc Size:	150x20 mm
Table Size:	27x22cm
Qty / Ctn:	4pcs
Ctn Size:	65x37x49cm
G.W./Ctn:	22kgs
N.W./Ctn:	21kgs

## Mini Grinding Machine



### TM-2H

Voltage:	230V/50HZ or 110V/60HZ
Power:	200W
Variable Speed:	0-10000 RPM
Motor Spindle Diameter:	8mm
Grinding Wheel:	75x20x10 mm
Polishing Pad Size:	100mm
Qty / Ctn:	4pcs
Ctn Size:	67x33x23cm
G.W./Ctn:	13kgs
N.W./Ctn:	12kgs

## Mini Sanding Machine



### TM-2S

Voltage:	230V/50HZ or 110V/60HZ
Power:	200W
Variable Speed:	0-10000 RPM
Motor Spindle Diameter:	8mm
Sanding Belt Size:	30X330 mm
Buffing Wheel Size:	75mm
Qty / Ctn:	4pcs
Ctn Size:	67x33x23cm
G.W./Ctn:	15kgs
N.W./Ctn:	14kgs

## Super Power Mini Bench Grinder



### TM-3

Voltage:	230V/50HZ or 110V/60HZ
Power:	200W
Variable Speed:	0-10000 RPM
Grinding Wheel Size:	75x20x10mm
Arbor Hole:	10mm
Qty / Ctn:	4pcs
Ctn Size:	67x33x23cm
G.W./Ctn:	15kgs
N.W./Ctn:	14kgs

## Super Power Mini Bench Grinder, With Flexible Shaft



### TM-3A

Voltage:	230V/50HZ or 110V/60HZ
Power:	200W
Vairable Speed Control:	0-10000RPM
Flexible Shaft Legnth:	92.5cm
Hand Piece Collet:	1-4mm
Grinding Wheel Size:	75x20mm
Arbor Hole:	10mm
Qty/Ctn:	4pcs
Ctn Size:	68x36x23cm
G.W:	17kgs
N.W:	16kgs

## Super Power Mini Buffing Machine



### TM-5B

Voltage:	230V/50HZ or 110V/60HZ
Power:	300W
Variable Speed:	0-8500RPM
Motor Spindle Diameter:	10mm
Cloth Wheel:	75mm
Cloth Wheel Arbor:	Tapered Spiral Spindle
Qty / Ctn:	4pcs
Ctn Size:	67x33x23cm
G.W./Ctn:	13kgs
N.W./Ctn:	12kgs

## Mini Bench Grinder With Drill Chuck



### TM-5D

Voltage:	230V/50HZ or 110V/60HZ
Power:	300W
Variable Speed:	0-8500RPM
Motor Spindle Diameter:	10mm
Grinding Wheel:	75x20x10mm
Grinding Wheel Arbor:	10mm
Drill Chuck Size:	1-6.5mm
Qty / Ctn:	4pcs
Ctn Size:	67x33x23cm
G.W./Ctn:	14kgs
N.W./Ctn:	13kgs

## Mini Bench Grinder With Flexible Shaft



### TM-5E

Voltage:	230V/50HZ or 110V/60HZ
Power:	300W
Variable Speed:	0-8500RPM
Motor Spindle Diameter:	10mm
Grinding Wheel:	75x20x10mm
Grinding Wheel Arbor:	10mm
Hand Piece Collet:	1-4mm
Flexible Shaft Length:	97cm
Qty / Ctn:	4pcs
Ctn Size:	67x33x23cm
G.W./Ctn:	15kgs
N.W./Ctn:	14kgs

Mini Bench Grinder, With Splash Guard



TM-5F

Voltage:	230V/50HZ or 110V/60HZ
Power:	300W
Variable Speed:	0-8500RPM
Motor Spindle Diameter:	10mm
Cloth Wheel:	75mm
Cloth Wheel Arbor:	Tapered Spiral Spindle
Qty / Ctn:	4pcs
Ctn Size:	72x38x26cm
G.W./Ctn:	20kgs
N.W./Ctn:	19kgs

Mini Bench Grinder, With Splash Guard, With Flexible Shaft



TM-5F2

Voltage:	230V/50HZ or 110V/60HZ
Power:	300W
Variable Speed:	0-8500RPM
Motor Spindle Diameter:	10mm
Cloth Wheel:	75mm
Cloth Wheel Arbor:	Tapered Spiral Spindle
Hand Piece Collet:	1-4mm
Flexible Shaft Length:	97cm
Qty / Ctn:	4pcs
Ctn Size:	72x38x26cm
G.W./Ctn:	22kgs
N.W./Ctn:	21kgs



## Mini Bench Grinder, With Dust Collector



### TM-5F6

Voltage:	230V/50HZ or 110V/60HZ
Power:	300W
Variable Speed:	0-8500 RPM
Motor Spindle Diameter:	10mm
Cloth Wheel:	75mm
Cloth Wheel Arbor:	Tapered Spiral Spindle
Qty / Ctn:	1pc
Ctn Size:	56x34x35cm
G.W./Ctn:	9kgs
N.W./Ctn:	8kgs

## Mini Cutting Machine



### TM-5G

Voltage:	230V/50HZ or 110V/60HZ
Power:	300W
Variable Speed:	0-8500RPM
Motor Spindle Diameter:	10mm
Cutting Disc Size:	150x20mm
Table Size:	29x26cm
Qty / Ctn:	4pcs
Ctn Size:	65x37x49cm
G.W./Ctn:	27kgs
N.W./Ctn:	26kgs

## Mini Cutting Machine With Flexible Shaft



### TM-5G2

Voltage:	230V/50HZ or 110V/60HZ
Power:	300W
Variable Speed:	0-8500RPM
Motor Spindle Diameter:	10mm
Hand Piece Collet:	1-4mm
Flexible Shaft Length:	97cm
Cutting Disc Size:	150x20mm
Table Size:	29x26cm
Qty / Ctn:	4pcs
Ctn Size:	65x37x49cm
G.W./Ctn:	29kgs
N.W./Ctn:	28kgs

## Mini Bench Grinder



### TM-5H

Voltage:	230V/50HZ or 110V/60HZ
Power:	300W
Variable Speed:	0-8500 RPM
Motor Spindle Diameter:	10mm
Grinding Wheel:	75x20x10 mm
Polishing Pad Size:	100mm
Qty / Ctn:	4pcs
Ctn Size:	67x33x23cm
G.W./Ctn:	14kgs
N.W./Ctn:	13kgs

## Mini Lapping Machine, With Diamond Lapping Wheel (Angle Adjustable, with Water Cooling System)



### TM-3L3-L

Voltage:	230V/50HZ or 110V/60HZ
Power:	200W
Variable Speed:	0-10000 RPM
Motor Spindle Diameter:	10mm
Diamond Wheel Size:	100mm
Qty / Ctn:	2pcs
Ctn Size:	56x28x29cm
G.W./Ctn:	17kgs
N.W./Ctn:	16kgs

## Mini Vertical Polishing Machine



### TM-3L3-B

Voltage:	230V/50HZ or 110V/60HZ
Power:	200W
Variable Speed:	0-10000RPM
Motor Spindle Diameter:	10mm
Qty / Ctn:	1pc
Ctn Size:	25x26x34cm
G.W./Ctn:	8.5kgs
N.W./Ctn:	8kgs

## Flexible Shaft Hanging Motor



### TM-31A

<b>Voltage:</b>	230V/50HZ or 110V/60HZ
<b>Power:</b>	120W
<b>Variable Speed:</b>	500-20000RPM
<b>Flexible Shaft Length:</b>	92.5cm
<b>Hand Piece Collet:</b>	1-4mm
<b>Qty / Ctn:</b>	5pcs
<b>Ctn Size:</b>	55x40x30cm
<b>G.W./Ctn:</b>	20kgs
<b>N.W./Ctn:</b>	19kgs

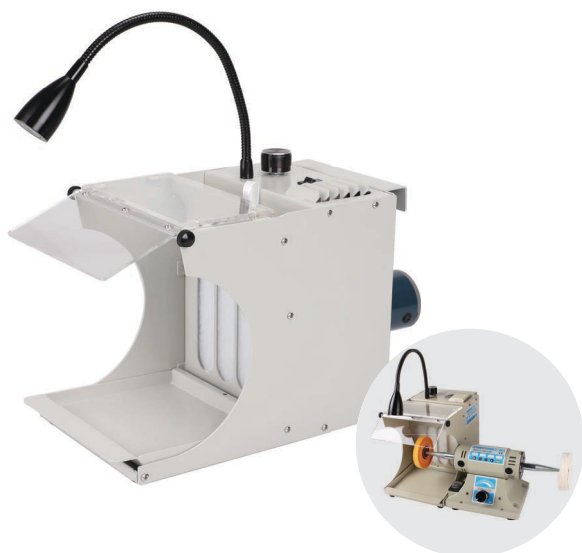
## Flexible Shaft Hanging Motor, Super Power



### TM-31B

<b>Voltage:</b>	230V/50HZ or 110V/60HZ
<b>Power:</b>	300W
<b>Variable Speed:</b>	0-21000RPM
<b>Flexible Shaft Length:</b>	92.5cm
<b>Hand Piece Collet:</b>	1.5-6mm
<b>Qty / Ctn:</b>	4pcs
<b>Ctn Size:</b>	62x43x32cm
<b>G.W./Ctn:</b>	17kgs
<b>N.W./Ctn:</b>	16kgs

## Filter Hood With Light



### TM-54B2

<b>Voltage:</b>	230V/50HZ or 110V/60HZ
<b>Power of Fan:</b>	25W
<b>Fan Variable Speed:</b>	0-4700 RPM
<b>Filter's Kind:</b>	Polyester filters x2
<b>Qty / Ctn:</b>	4pcs
<b>Ctn Size:</b>	51x39x62cm
<b>G.W./Ctn:</b>	19kgs
<b>N.W./Ctn:</b>	18kgs

## Splash Guard



### TM-54B

<b>Description:</b>	Splash Guard
<b>Size:</b>	36x15x20cm

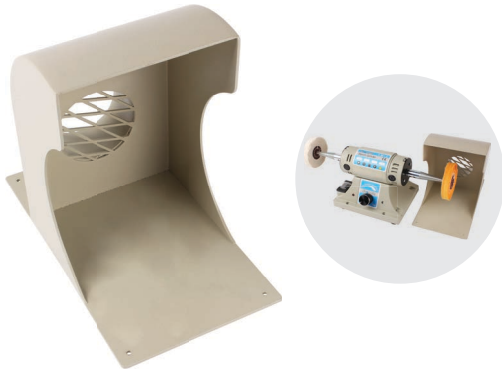
## Dust Collecting Hood



### DCH-23

<b>Voltage:</b>	230V/50HZ
<b>Power Of Fan:</b>	38W
<b>Dimension:</b>	58X36X35cm

## Dust Hood



### DCH-24

Description:	Dust Collecting Hood
Size:	11.5 x 22 x 17.5cm

## Vacuum Dust Collector



### DCL-26

Voltage:	220V/50HZ OR 110V/60HZ
Power:	370W
Max Air Pressure:	17KPA
Max Air Flow	70M3/H
Max Vacuum:	-9.8KPA
Max Noise	60DB
Dimension:	25X20X32CM

## Flexible Shaft



### TM-41A

Applicable Machine:	Electric Drill
Drive Pin Diameter:	6mm
Shaft Length x Diameter:	130x1.2cm
Drill Chuck Size:	6mm
Max Speed:	2800rpm
Max Strength:	8Nm

## Flexible Shaft



### TM-41B

Applicable Machine:	Electric Drill
Drive Pin Diameter:	8mm
Shaft Length x Diameter:	130x1.2cm
Drill Chuck Size:	10mm
Max Speed:	2800RPM
Max Strength:	8Nm

## Flexible Shaft



### TM-41C

Applicable Machine:	Electric Drill
Drive Pin Diameter:	6mm
Shaft Length x Diameter:	128x1.2cm
Drill Chuck Size:	6mm
Max Speed:	2800RPM
Max Strength:	8Nm

## Flexible Shaft



### TM-42A

Applicable Machine:	Hanging Motor TM-31A
Length:	92.5cm

Flexible Shaft



TM-42B

Applicable Machine:	Bench Grinder TM-1A, TM-5A2
Length:	108cm

Flexible Shaft



TM-42C

Applicable Machine:	Bench Grinder TM-3A, TM-5A
Length:	92.5cm

Flexible Shaft



TM-42D

Applicable Machine:	Bench Grinder TM-2B, TM-2C, TM-2D, TM-2E
Length:	97cm

Flexible Shaft



TM-42F

Applicable Machine:	TM-5E, TM-5F2, TM-5G2
Length:	92.5cm

## Tapered Spiral Spindle , Left+Right / Set



### TM-51A

Application:	For Cloth Wheel
Connection Hole:	10MM: <a href="#">TM-51A-10</a>

## Tapered Spiral Spindle , Left+Right / Set



### TM-51B

Application:	For Cloth Wheel
Connection Hole:	8MM: <a href="#">TM-51B-8</a>
	10MM: <a href="#">TM-51B-10</a>

## Drill Chuck, Right Side



### TM-51C

Size:	1-6.5mm
	8mm: <a href="#">TM-51C-8</a>
Connection Hole:	10mm: <a href="#">TM-51C-10</a>

## Wheel Mandrel, Left+Right / Set



### TM-51D

Application:	For Grinding Wheel
Length:	35mm
Wheel Arbor Diameter:	10mm
Connection Hole:	8mm: <a href="#">TM-51D-8</a>
	10mm: <a href="#">TM-51D-10</a>



Wheel Mandrel, Left+Right / Set



TM-51E-10

Application:	For Sanding Drum, Wheel Clamp
Length:	63mm
Wheel Arbor Diameter:	10mm
Connection Hole:	10mm

Sanding Drum, Right Side or Left Side



Arbor Hole:	10mm
Size:	50.8x50.8mm

Wheel Clamp, Right Side or Left Side



TM-51G

Arbor Hole:	10mm
Size:	ø15xø21mm

Polishing Pad, Right Side



TM-51H

Code:	Diameter x Connection Hole:
TM-51H-100X8R	100mmx8mm
TM-51H-100X10R	100mmx10mm

## Diamond Wheel, Left Side



**TM-51L**

Connection Hole:	10mm
Size:	100mm

## Grinding Wheel



**TM-52A**

Description:	Grinding Wheel
Size:	75x20x10mm

## Non-Woven Fabric Wheel Yellow Cloth Wheel White Cloth Wheel



**TM-52B**

Description:	Non-Woven Fabric Wheel
Size:	75x20x10mm



**TM-52C-75Y**

Description:	Yellow Cloth Wheel
Size:	75mm



**TM-52C-75W**

Description:	White Cloth Wheel
Size:	75mm

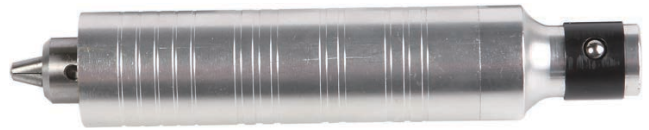
Brush Wheel



TM-52D

Description:	Brush Wheel
Size:	80mm

Hand Piece



TM-53C

Collet:	1-4mm
Max RPM:	20000RPM

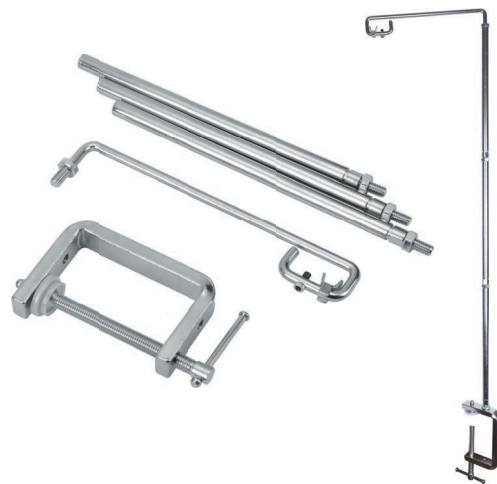
Hand Piece



TM-53C2

Collet:	1-6mm
Max RPM:	20000rpm
Type:	Heavy Duty

Extending Clamp for Hanging Motor



TM-54A2

Description:	Extending Clamp for Hanging Motor
Height:	75cm



## WUXI JICRADE TECH CO.,LTD.

Unit D-21,288-1101 Zhongshan Road,Wuxi,Jiangsu,China

PC: 214400

Tel: +86-510-85755198

Mobile: +86-135 0616 0675

E-mail: [ji@jicrade.com](mailto:ji@jicrade.com)